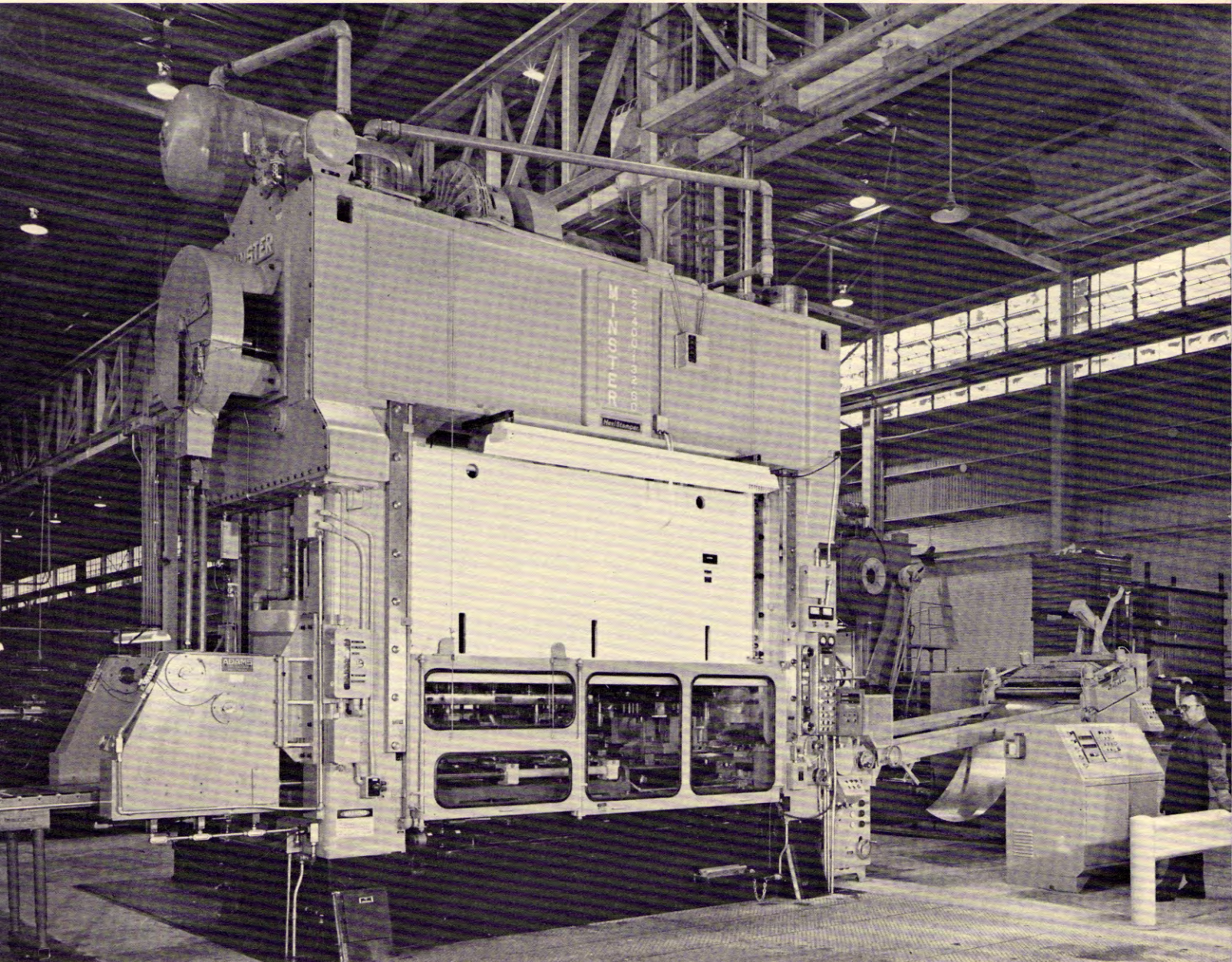


Today Is the Key to Tomorrow.



Whirlpool Builds for the Future on What Happens today



The E2 HeviStamper, installed at Whirlpool, is equipped with electronically controlled feed and operates in the 20 to 40 spm speed range.

Early last spring, Whirlpool Corporation's Marion Division, Marion, Ohio, manufactured its 15-millionth appliance, representing the combined total of dryers, ranges, dry cleaners and window air conditioners. Quite an accomplishment for the Division's 18 year history. When manufacturing began in 1955, there were 479 employees; today there are over 1750.

Long recognized as a leader among appliance manufacturers, the Corporation and its Marion Division take justifiable pride in product quality. In 1972, Marion Division again earned the coveted Sears Symbol of Excellence Award for superior performance on dryers built for Sears in 1972. This was the seventh year for the award. Whirlpool, too, is a leader in manufacturing technology designed to increase quality and productivity.

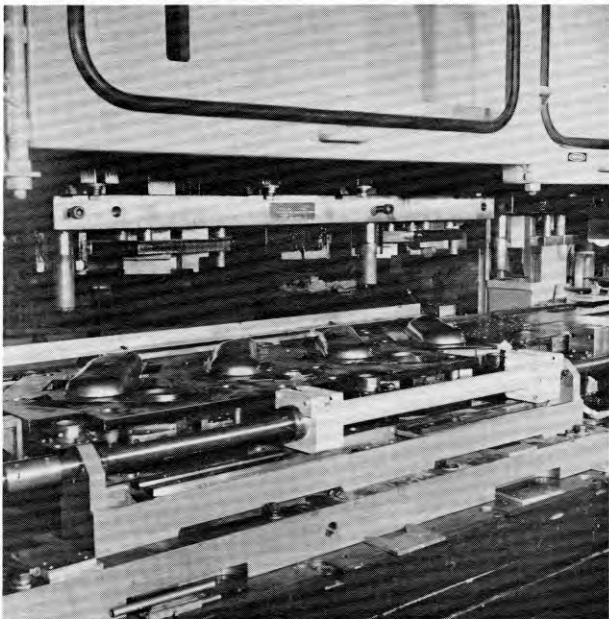
MINSTER E2 HEVISTAMPER® MEASURES UP!

Whirlpool requires presses with extra rigidity and precision machining tolerances for their progressive/transfer stamping. They again chose a Minster Two Point, Eccentric Shaft HeviStamper®, this time, an E2-400-132-60—to 1) extend the life of multi-station blanking and forming tooling working under high shock and heavy break-through loading—and 2) achieve maximum press

utilization. Here's what Minster's superior precision machining and massive component construction provided.

- A specially engineered, heavy duty bed to meet unusually strict deflection specifications to compensate for the large bed opening. Maximum deflection of bed is .0015" per ft.
- Six precision fitted main bearings which hold alignment of the long, two point, full eccentric shaft within .002" over entire length of the crown.
- Full precision matched eccentrics of shaft to apply force to twin connections with absolute minimum of deflection.
- Precision slide alignment with 8 point gib design. Gib clearance is approximately .003".
- Slide to bed parallelism held to .006" total . . . left to right and front to back . . . at bottom of stroke. Slide never leaves the gibs.
- Minster's MonitorFlow® recirculating oil lubrication system to protect the close tolerances throughout the press.

With these and other special features, Minster's E2 HeviStamper really measures up to Whirlpool's exacting manufacturing requirements.



Close up photo shows E2 producing air duct covers and fan housings from mild steel .018" to .023" thick on progressive transfer dies.



Glen Schurch, Maintenance Engineer, and Bob Boblenz, Tool Engineer, inspect an air duct cover.