

# Eyelets For Industry

## Meeting the Demands of the Industry.

Eyelets For Industry (EFI), was founded in 1964, in Waterbury, Ct. Over the past 30 years, the company has celebrated its reputation as one of the leading manufacturers of high quality, precision drawn/and stamped metal products in its field. It has supplied parts used in virtually every major market and is a certified supplier to many of its valued customers.

“EFI produces components for the medical field, watches, batteries, dental field, and automotive field,” said Charles Houle, Plant Manager. “Because many of our products have complicated shapes that are critical to their performance, we have to use a press that will conform to our rigorous

requirements in a short amount of time. That’s why we use Minsters.”

Houle was raised on Minster presses. He’s worked on them for over 36 years. EFI has used them for 29 years. “Minster’s dependability is its most impressive factor to a company like EFI,” said Houle. “I’ve experienced many problems with other presses which have proved to be too expensive to maintain, while all my repairs to Minster presses have been so minor that they’ve been handled in-house. And the times I’ve needed to call Minster for a replacement part, the part was always received within 24 hours.”

EFI prides itself on its high standard of



*“Minster’s dependability is its most impressive factor to a company like EFI.”*

Charles Houle  
Plant Manager  
Eyelets For  
Industry, Inc.

quality. For that reason the company employs nine P2-60's, one P2-30, and several TR-215 Minster presses. With both transfer and progressive type presses, EFI has a variety of production alternatives. The company's knowledge of material sciences leads the industry. Complete metallurgical and engineering services are always available.

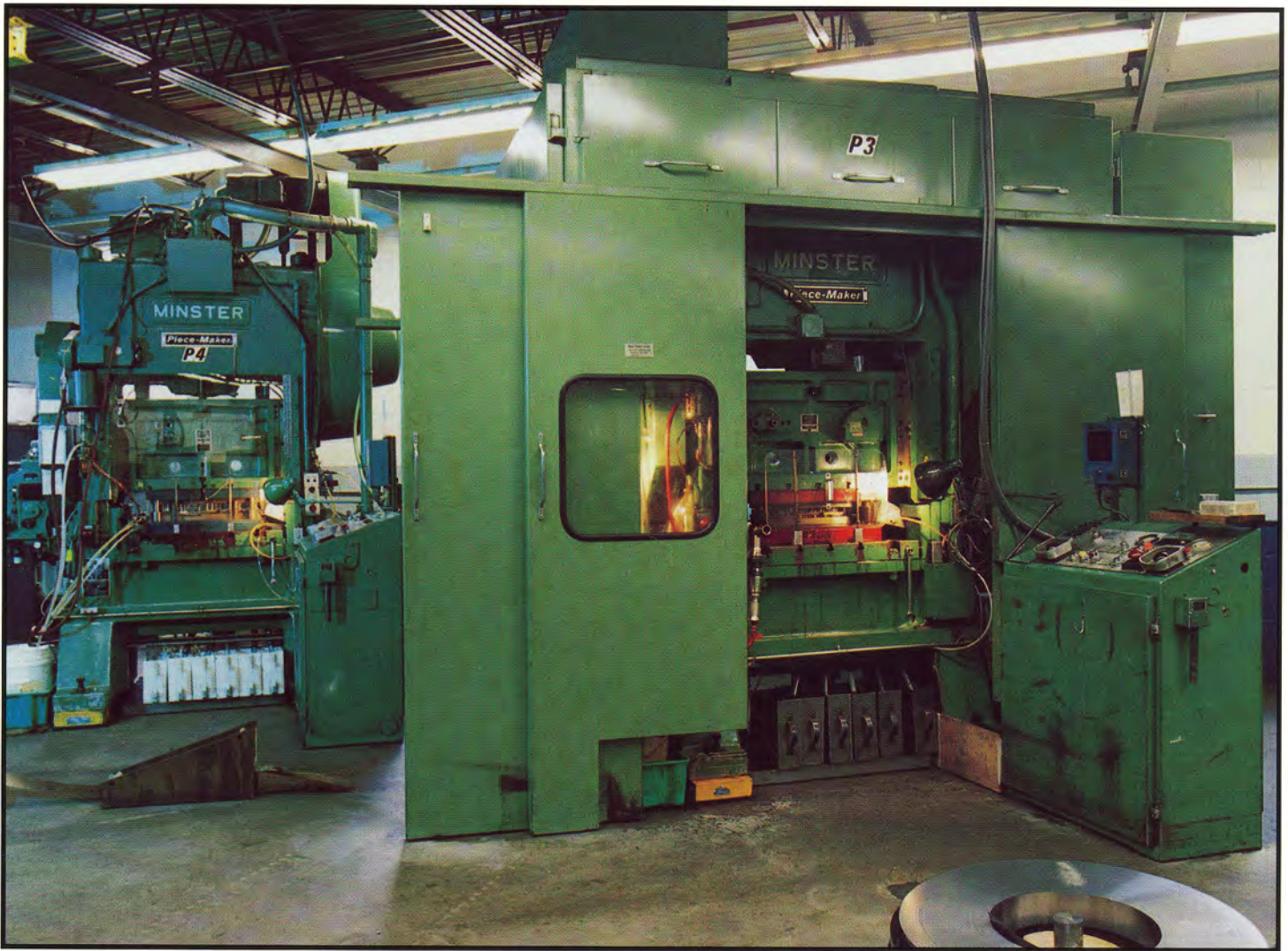
The company uses a variety of base metals such as Red Metal, Aluminum, Cold Rolled Steel, Stainless Steel, Pre-Plated Finishes, as well as exotic alloys such as Tantalum, Niobium, and Titanium.

"In 1993," said Houle, "EFI produced over 1.25 billion parts between two shifts. Every year that number grows, due in part to the dependability of our Minster presses."

Houle stated that EFI's Just In Time (JIT) inventory was very low. "We can do that because we've developed our own method that allows us to break down one and set up another in less than one hour. We've learned that a company has to have confidence in its press so that down-time is limited to a tooling problem -- not so much press related. We have that confidence in Minster."

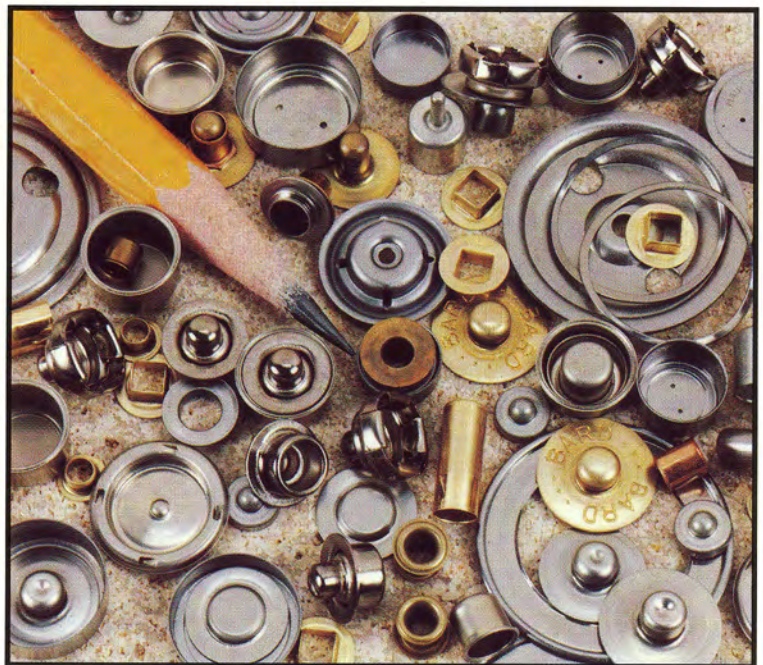


*A wide range of intricate stampings are produced on Minster P2 PieceMakers at Eyelets for Industry.*



Houle cited a recent order for 500,000 components to be delivered to the customer the next day. "Those parts were received on time."

EFI's promise to their customers -- a genuine commitment to exceed their most critical requirements -- is being met every day. The company plans to continue its success with the help of Minster presses.



*Over one billion parts such as these eyelets are produced at Eyelets for Industry each year.*