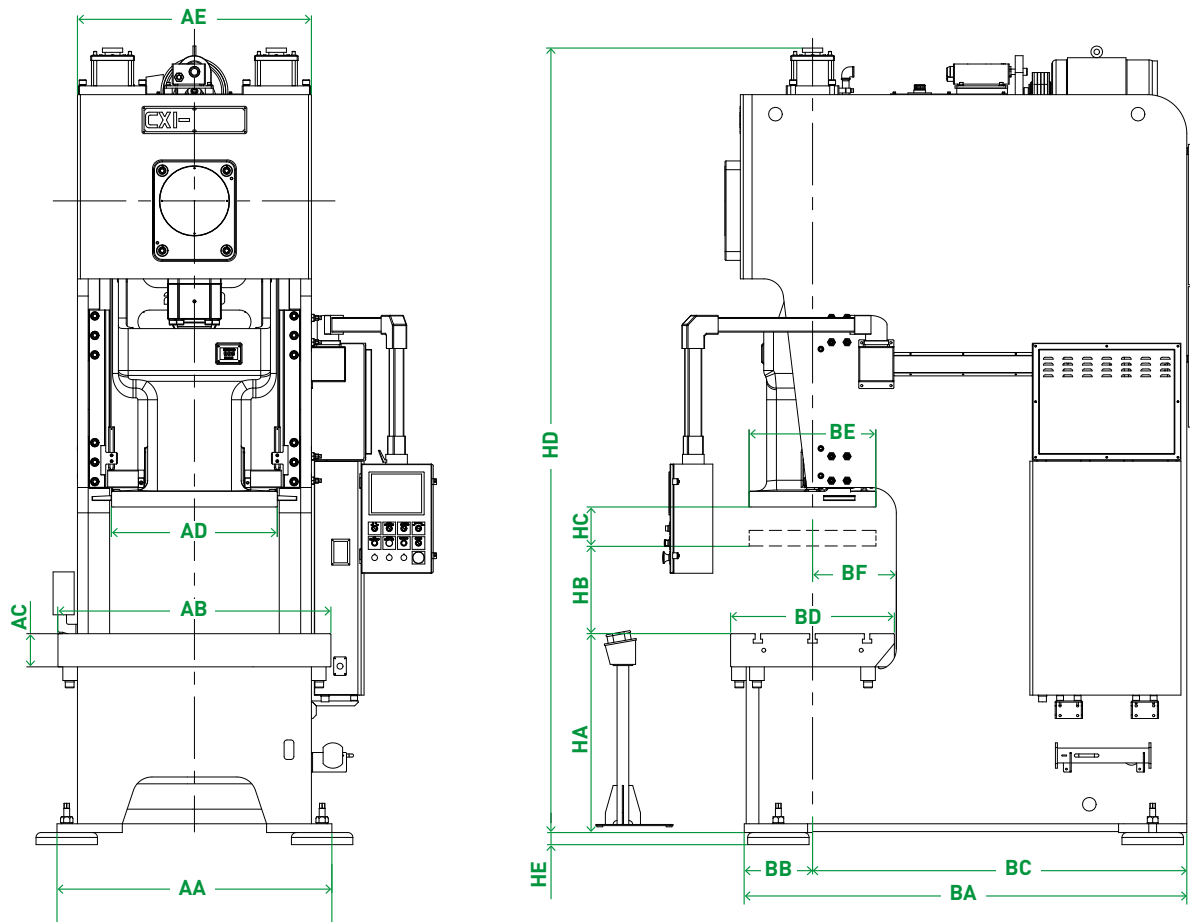


Specifications & Dimensions CX1 Series

		CX1-450		CX1-600		CX1-800		CX1-1100	
		L	S	L	S	L	S	L	S
Press Type									
Capacity in Tons		45 metric ton		60 metric ton		80 metric ton		110 metric ton	
		49.5 US ton		66 US ton		88 US ton		121 US ton	
Torque Capacity from BDC	mm	3.2	1.6	4	2	5	3.2	5	3.2
	in	0.126	0.063	0.157	0.079	0.197	0.126	0.197	0.126
Approximate Press Weight	kg	3,800		5,600		7,000		9,500	
	lb	8,360		12,320		15,400		20,900	
Stroke Length	mm	80	50	120	60	150	100	180	110
	in	3.15	1.97	4.72	2.36	5.91	3.94	7.09	4.33
Speed Range at Full Tonnage	spm	50-100	75-150	45-90	60-120	40-75	55-110	30-60	50-100
Area of Slide, R-L x F-B	mm	400 x 300		500 x 360		700 x 460		960 x 520	
	in	15.75 x 11.81		19.69 x 14.17		27.56 x 18.11		37.80 x 20.47	
Recommended Max Upper Die Weight	kg	300		300		500		550	
	lb	660		660		1,100		1210	
Bolster Plate Thickness	mm	90		90		100		120	
	in	3.54		3.54		3.94		4.72	
Area of Bolster, R-L x F-B	mm	850 x 440		900 x 500		1,000x600	1,000x460	1,150x680	1,150x520
	in	33.46 x 17.32		35.43 x 19.69		39.4x23.6	39.4x18.11	45.3x26.8	45.3x20.5
Throat Depth, F-B	mm	225		255		305	235	350	270
	in	8.86		10.04		12.01	9.25	13.78	10.63
Bed Deflection	mm	1/6,000		1/6,000		1/6,000		1/6,000	
	in	0.0018		0.0018		0.0018		0.0018	
Shutheight Maximum (SDAU)	mm	250		310		330	300	350	320
	in	9.84		12.20		12.99	11.81	13.78	12.60
Shutheight Adjustment	mm	60		75		80		80	
	in	2.36		2.95		3.15		3.15	
Drive Motor	kw	3.7		5.5		7.5		7.5	
	hp	5.0		7.4		10.1		10.1	
Compressed Air Requirement	Mpa	0.55		0.55		0.55		0.55	
	psi	80		80		80		80	

Specifications & Dimensions CX1 Series

		CX1-1600		CX1-2000		CX1-2500		CX1-3150	
		L	S	L	S	L	S	L	S
Press Type									
Capacity in Tons		160 metric ton		200 metric ton		250 metric ton		315 metric ton	
		176 US ton		220 US ton		275 US ton		346.5 US ton	
Torque Capacity from BDC	mm	6	3.2	6	4.5	7	4.5	7	4.5
	in	0.236	0.126	0.236	0.177	0.276	0.177	0.276	0.177
Approximate Press Weight	kg	13,000		20,000		26,000		29,000	
	lb	28,600		44,000		57,200		63,800	
Stroke Length	mm	200	130	200	160	200	160	250	160
	in	7.87	5.12	7.87	6.30	7.87	6.30	9.84	6.30
Speed Range at Full Tonnage	SPM	25-50	40-80	25-45	35-70	20-40	30-60	20-40	30-60
Area of Slide, R-L x F-B	mm	980 x 580		1100 x 650		1200 x 700		1200 x 700	
	in	38.58 x 22.83		43.31 x 25.59		47.24 x 27.56		47.24 x 27.56	
Recommended Max Upper Die Weight	kg	550		900		900		920	
	lb	1,210		1,980		1,980		2,024	
Bolster Plate Thickness	mm	150		170		180		180	
	in	5.91		6.69		7.09		7.09	
Area of Bolster, R-L x F-B	mm	1250 x 760	1250 x 600	1400 x 840	1400 x 680	1500 x 900	1500 x 710	1600 x 900	1600 x 710
	in	49.2 x 29.92	49.21 x 23.62	55.12 x 33.07	55.12 x 26.77	59.06 x 35.43	59.06 x 27.95	62.99 x 35.43	62.99 x 27.95
Throat Depth, F-B	mm	390	310	430	350	460	380	460	380
	in	15.35	12.20	16.93	13.78	18.11	14.96	18.11	14.96
Bed Deflection	mm	1/6,000		1/6,000		1/6,000		1/6,000	
	in	0.0018		0.0018		0.0018		0.0018	
Shutheight Maximum (SDAU)	mm	450	400	450	400	450	400	450	400
	in	17.72	15.75	17.72	15.75	17.72	15.75	17.72	15.75
Shutheight Adjustment	mm	100		110		120		120	
	in	3.94		4.33		4.72		4.72	
Drive Motor	kW	11		15		15		18.5	
	hp	14.7		20.1		20.1		24.8	
Compressed Air Requirement	Mpa	0.55		0.55		0.55		0.55	
	psi	80		80		80		80	



		CX1-450		CX1-600		CX1-800		CX1-1100		CX1-1600		CX1-2000		CX1-2500		CX1-3150	
		L	S	L	S	L	S	L	S	L	S	L	S	L	S	L	S
AA	mm	790		910		1060		1110		1250		1410		1600		1700	
AB	mm	850		900		1000		1150		1250		1400		1500		1600	
AC	mm	90		90		100		120		150		170		180		180	
AD	mm	400		500		700		960		980		1100		1200		1200	
AE	mm	650		750		865		930		1030		1200		1340		1440	
BA	mm	1335		1495		1635		1790		1960		2270		2460		2715	
BB	mm	185		205		250		290		300		350		400		385	
BC	mm	1150		1290		1385		1500		1660		1920		2060		2330	
BD	mm	440		500		600	460	680	520	760	600	840	680	900	710	900	710
BE	mm	300		360		460		520		580		650		700		700	
BF	mm	225		255		310	240	350	270	390	310	430	350	460	380	460	380
HA	mm	800		800		835		840		900		1020		1100		1140	
HB	mm	250		310		305	235	350	320	450	400	450	400	450	400	450	400
HC	mm	80	50	120	60	150	100	180	110	200	130	200	160	200	160	250	160
HD	mm	2365	2350	2650	2620	2950	2860	3060	3000	3495	3420	4090	4020	4200	4130	4560	4490
HE	mm	45		53		53		53		62		62		62		62	

* Above specifications are subject to change when custom specifications apply.